

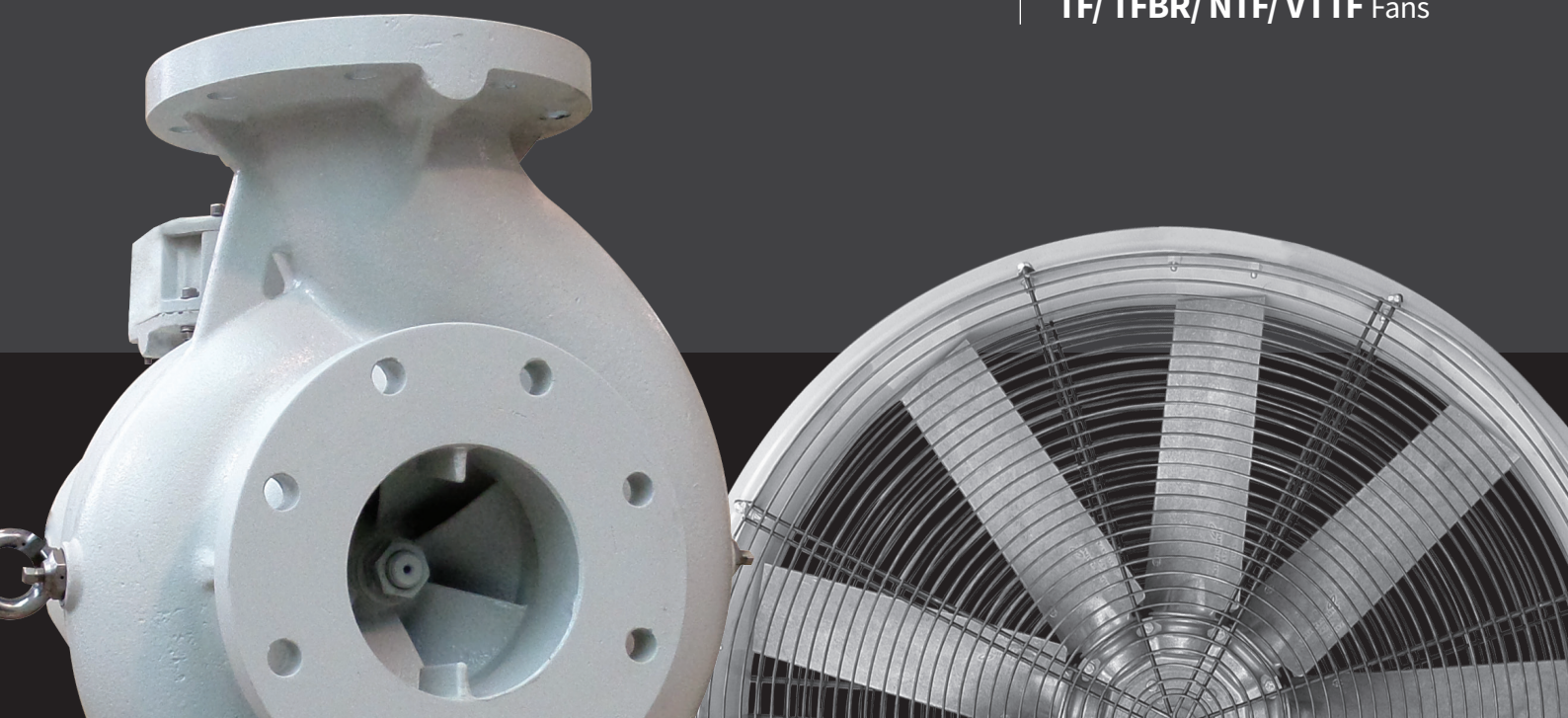
PUMPS AND FANS

Transformer Oil Cooling Solutions

Series

NTG/ TG/ TGCL Pumps

TF/ TFBR/ NTF/ VTTF Fans





CERTIFICATE OF APPROVAL

This is to certify that the Quality Management System of:

EFAFLU – Bombas e Ventiladores, S.A.
Rua de São Brás, 269, Apartado 23
4494-909 Póvoa de Varzim
Portugal

has been approved by Lloyd's Register Quality Assurance
to the following Quality Management System Standard:

ISO 9001:2008
NP EN ISO 9001:2008

The Quality Management Systems applicable to:

**Manufacture, sale and servicing of hydraulic pumps and
ventilators, and associated systems.**

This certificate is valid only in association with the certificate schedule bearing the same number
on which the locations applicable to this approval are listed.

Approval Certificate
No: LIS 4961857/11

Original Approval: 21 June 2000

Current Certificate: 14 April 2016

Certificate Expiry: 30 June 2018

Issued by: Lloyd's Register EMEA
For and on behalf of: Lloyd's Register Quality Assurance Limited

Main Location

Rua de São Brás
4494-909 Póvoa de Varzim
Portugal

Other Locations

Cacém Park
Estrada de Belas
Alto da Bela Vista
2735-238 Alameda
Portugal

Approval Certificate
No: LIS 4961857/11



001

Lloyd's Register EMEA Av. D. Carlos I, 44-6º, 1200-649 Lisboa, Portugal, Registration Number 110/910920
For and on behalf of LRQA, Ltd, 1 Trinity Park, Bickenhill Lane, Birmingham B37 7ES, United Kingdom

This approval is carried out in accordance with the LRQA assessment and certification procedures and monitored by LRQA.
The use of the UKAS Accreditation Mark indicates Accreditation in respect of those activities covered by the Accreditation Certificate Number 001
Macro Revision 14



Lloyd's Register
F

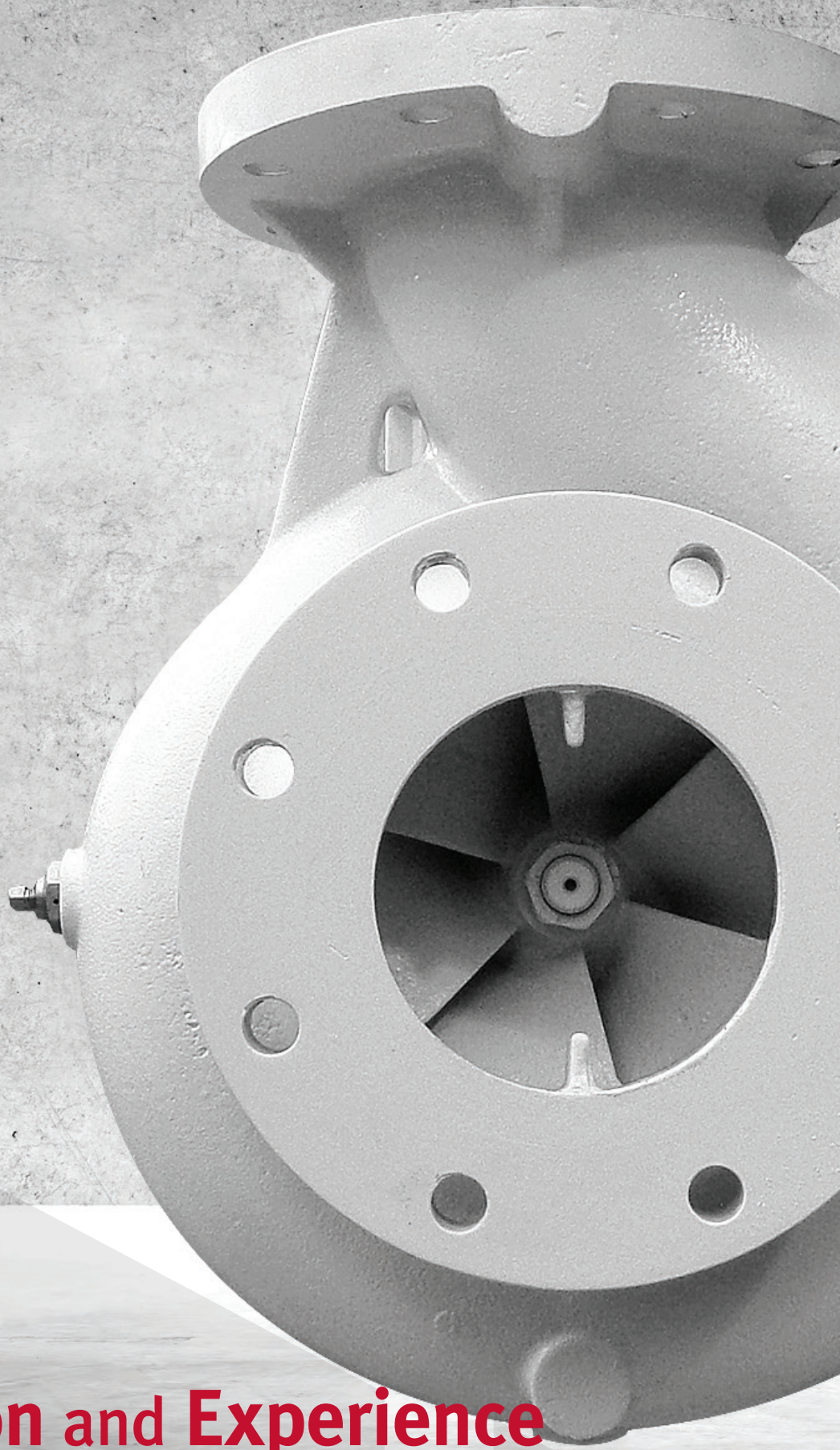
The use of the UKAS Accreditation Mark indicates Accreditation in respect of those activities covered by the Accreditation Certificate Number 001
Macro Revision 14

INDEX	
The company	3
Portfolio	4
Development	5
PUMPS	
Nomenclature	7
Inline axial pumps NTG	8
Inline axial pumps TG	11
End suction radial pumps TGCL	14
FANS	
Nomenclature	19
Short casing fans TF	20
Short casing fans TFBR	22
Short casing fans NTF	24
Long casing fans VTF	26
Other solutions	28
After-Sales Service and Commissioning	29


IMPORTANT NOTES

All information and specifications in this catalogue may be changed by EFAFLU without prior notice. This catalogue lists only some of the more common items in EFAFLU range.

For more information or products please contact our sales and technical departments:
export@efaflu.pt or **geral@efaflu.pt**



Innovation and Experience
at your *Service...*

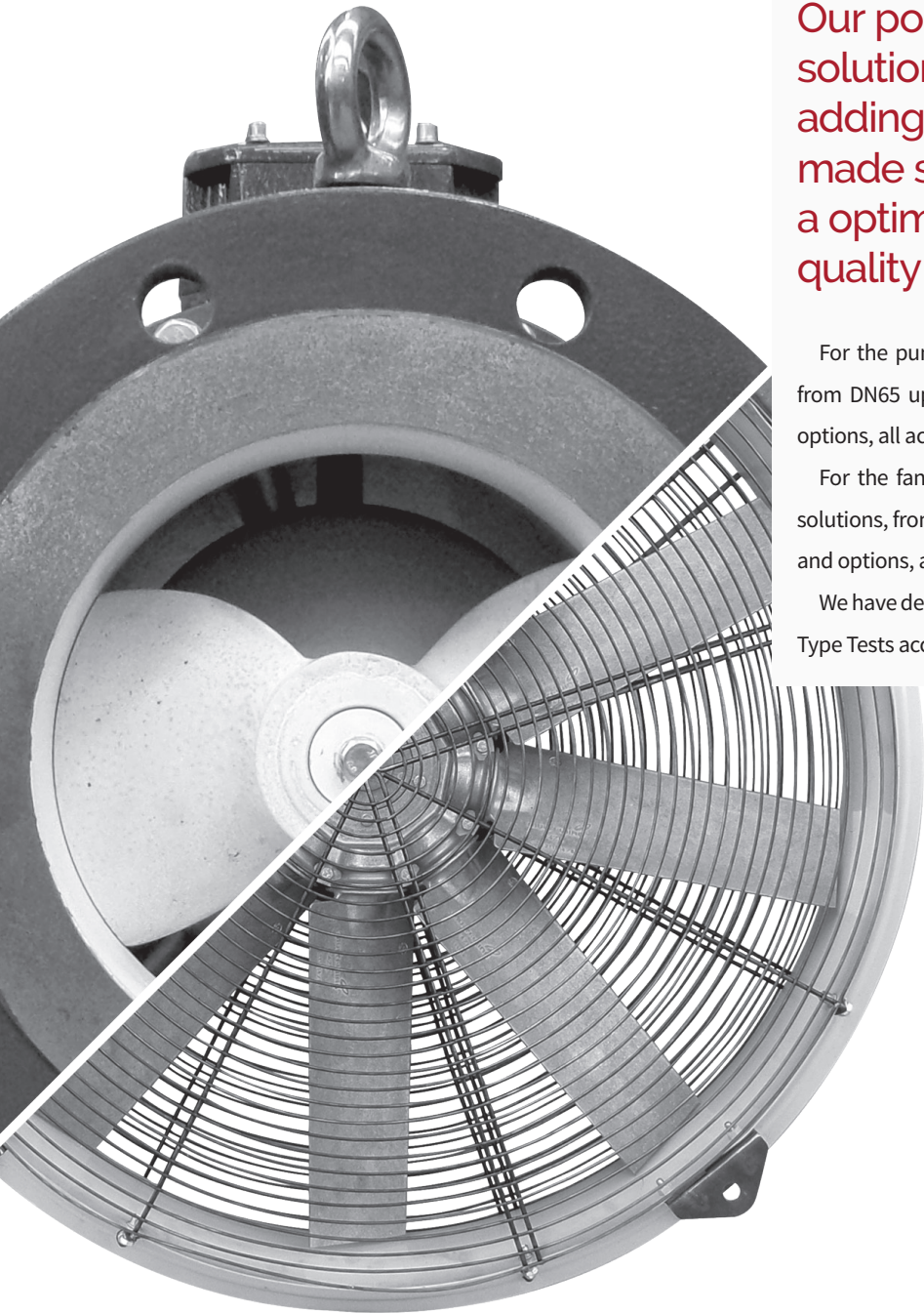


EFAFLU Bombas e Ventiladores, based in Portugal, has been a leading manufacturer of pumps and fans since 1946.

Since our foundation, we're focused on designing, developing, manufacturing and service for pumps and fans. Our products and equipments can be found working on all continents in the most demanding and challenging conditions and environments.

Efaflu belongs to a private group that has companies in Portugal, United Kingdom and Spain, with more than 100 collaborators. Our R&D, service, testing facilities and dedicated laboratories are located in Portugal.

We proudly develop our products, moulds and manufacture in Portugal. We offer and stock spare parts for more than 20 years. We have a complete portfolio of solutions for transformer oil cooling applications, from pumps to fans with a extensive range, options and flexible to meet our customers expectations, according to EN50216-7 and EN50216-12 respectively.

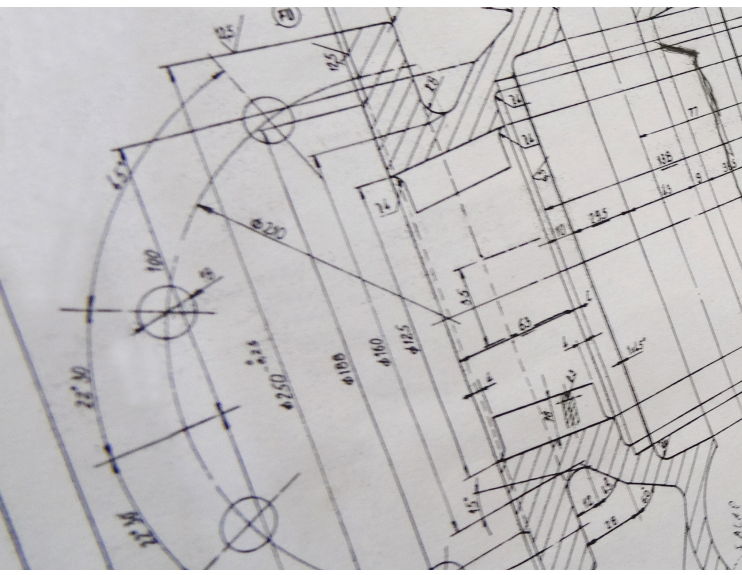
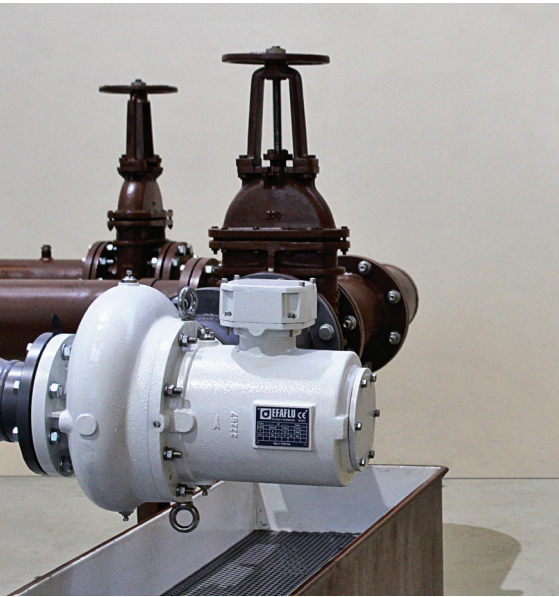


Our portfolio offers several solutions to our customers, adding flexibility and tailor made solutions, to ensure a optimal performance and quality of their transformers.

For the pumps range, we have inline and elbow solutions from DN65 up to DN200, several construction materials and options, all according to EN50216-7.

For the fans range, we have short casing and long casing solutions, from 450 up to 1000 mm, several surface treatments and options, all according to EN50216-12.

We have dedicated laboratories able to perform Routine and Type Tests according to EN50216-7 and EN50216-12.



Our R&D team works continuously to design and develop state-of-the-art solutions using advanced software technologies and laboratories technologies, such as thermal and mechanical software analysis, computational fluid dynamics as well as 3D printing solutions.

EFAFLU is able to develop tailor made solutions to their customers, to design specific solutions for their projects or adapt existing products to their requirements.

We use the most efficient motors according to European regulations, to ensure the optimal performance and low energy consumption of our products. To ensure the quality of our products, we offer high quality castings and high degree of surface protection.

We offer, as standard, C5-M surface painting protection with free possibility of choice of RAL colour to our customers.

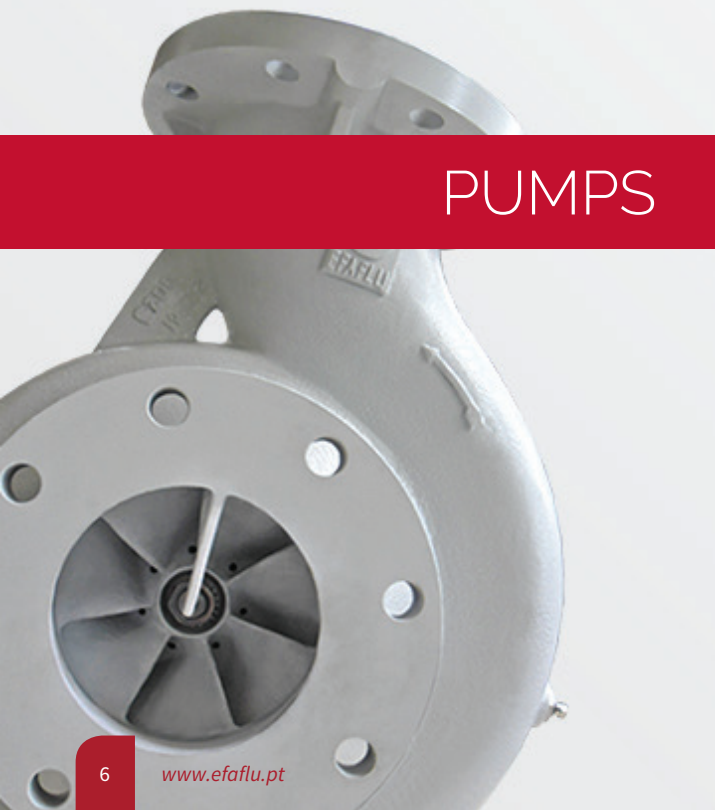


PUMPS

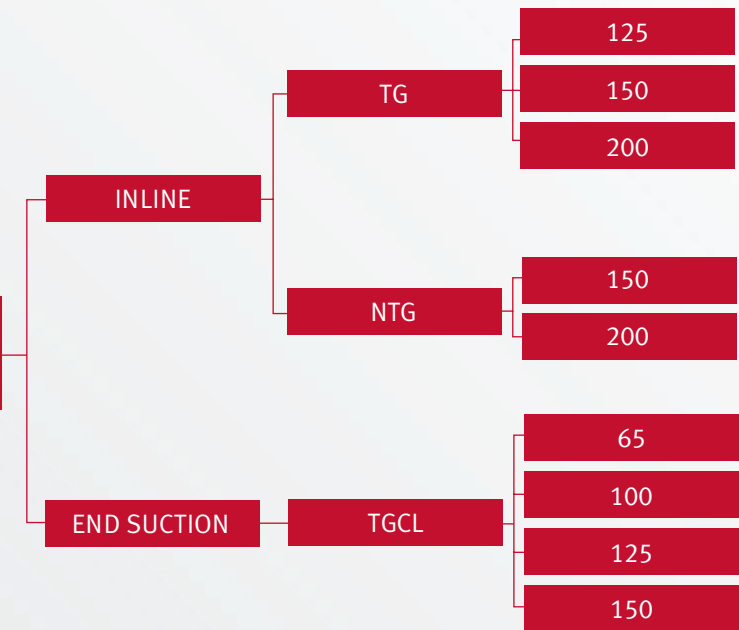
In our range we offer inline and elbow solutions, TG/NTG and TGCL respectively, from DN65 up to DN200, in several construction materials with a wide range of options.

Our pumps are designed and approved according to EN50216-7, all pumps delivered to our customers are 100% EN50216-7 Routine Tested delivered together with the certificate and report test. They're designed to work with mineral oil or synthetic ester, at temperatures from -20°C up to +115°C, manufactured in EN-GJL-250 Cast Iron, EN-GJS-400 Cast Iron or welded construction, using Viton® gaskets to ensure the most reliable operation mode.

To ensure a vibration free performance and to extend the bearings life, we perform dynamic balancing of the complete rotor set, according to ISO 1940.



PUMPS



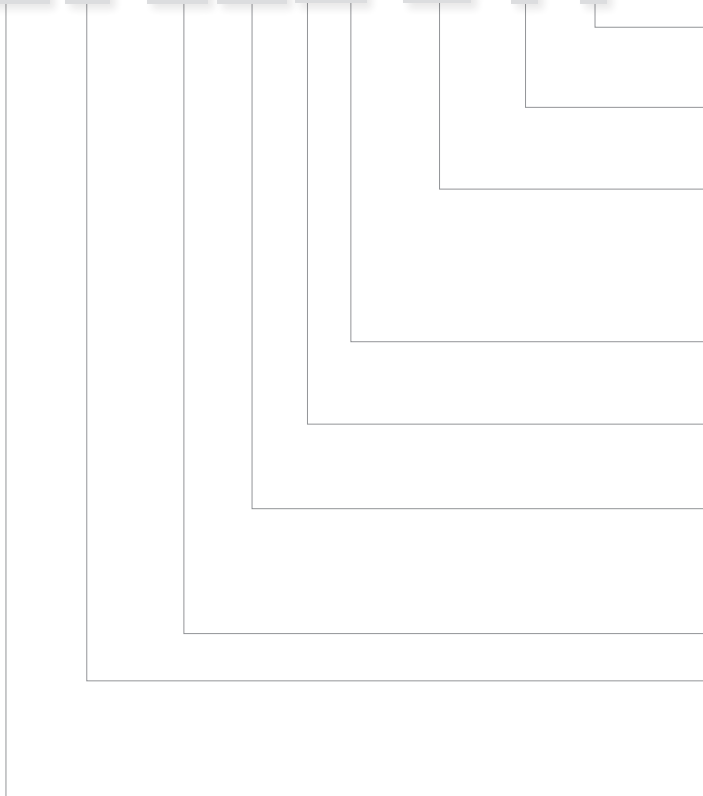
NOMENCLATURE

NTG 200 - 2 - 04 G A / 2,2 / 4 / N



Additional specifications N: Standard S: According to order
Number of poles 4 6
Nominal power (kW) 0,75 1,1 1,5 2,2 3
Impeller material A: Aluminium
Casing material G: EN GJL 250 S: EN GJS 400 W: Welded construction
Impeller blade angle 04° 06° 08° 10° 13°
Impeller blades number 2 3
Flange diameter (mm) 125 150 200
Series TG NTG

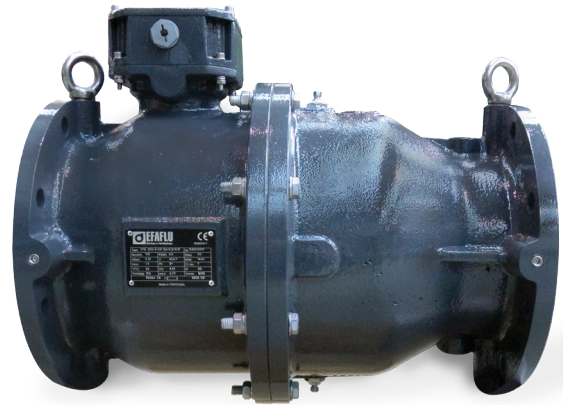
TGCL 65 - 125 80M G G / 0,75 / 4 / N



Additional specifications N: Standard S: According to order
Number of poles 4 6
Nominal power (kW) 0,75 3 4 5,5 7,5
Impeller material G: EN GJL 250 S: EN GJS 400
Casing material G: EN GJL 250 S: EN GJS 400
Motor casing 80M 100L 112M 132M
Impeller nominal diameter
Flange diameter (mm) 65 100 125 150
Series TGCL

CONSTRUCTION	
PARTS	MATERIALS
Casing	EN-GJL-250 or EN-GJS-400
Impeller	Aluminium Al Si10 Mg
Shaft	AISI420
Terminal Box	Aluminium Al Si10 Mg
Screws	A4 - AISI316

ELECTRICAL DATA	SPECIFICATIONS
Power	0,75 up to 3 kW
Poles	4/6
Voltage	3x400 VAC@50 Hz or 3x460VAC@60Hz



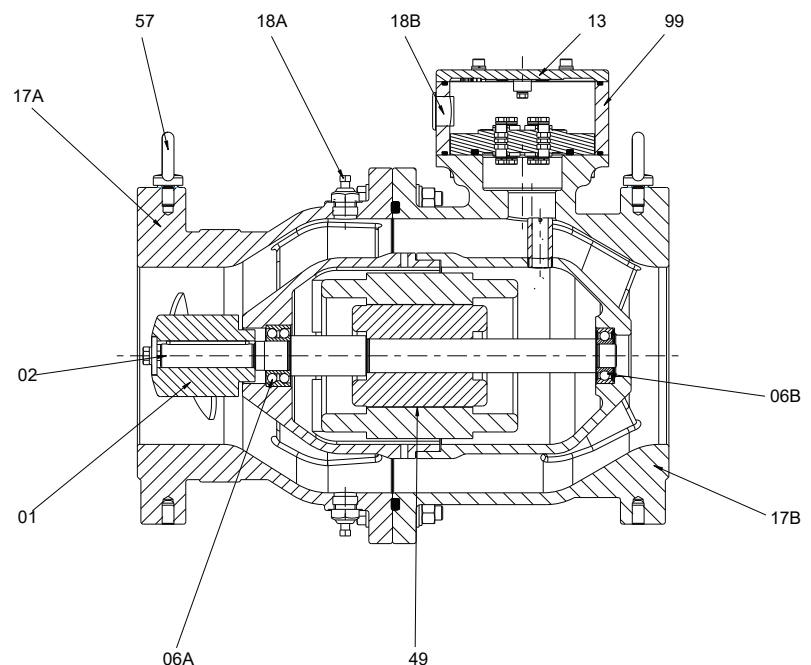
NTG

NTG is a inline axial type pump, from DN150 up to DN200, manufactured in EN-GJL-250 or EN-GJS-400 Cast iron with IP56 protection. The impeller and terminal box are in aluminium Al Si10 Mg. The pump is supplied, as standard, with C5-M surface treatment (320 µm). It can be installed horizontally or vertically according to the transformer layout, with a maximum sound pressure of 60 ± 2 dB(A) @ 1 meter (50 Hz), measured on free field hemispheric surface. Flanges can be DIN or ISO PN10, raised or flat faced.

It offers the possibility of having multiple motors of choice, either 4P or 6P, with hydraulic performance curves that will match the requirements of any project.

PART LIST

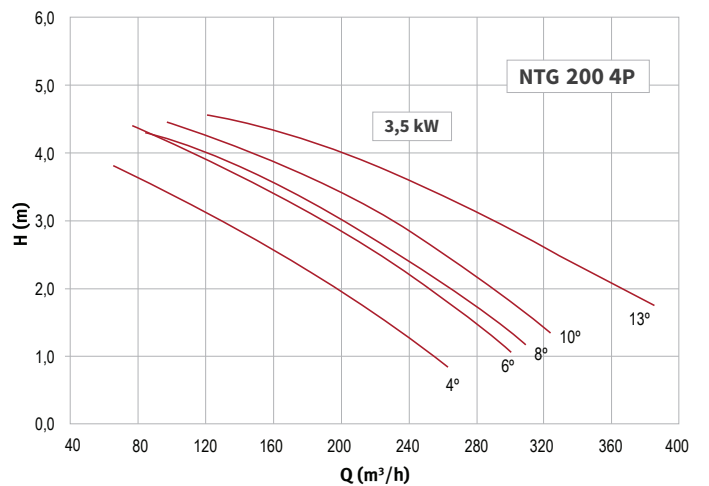
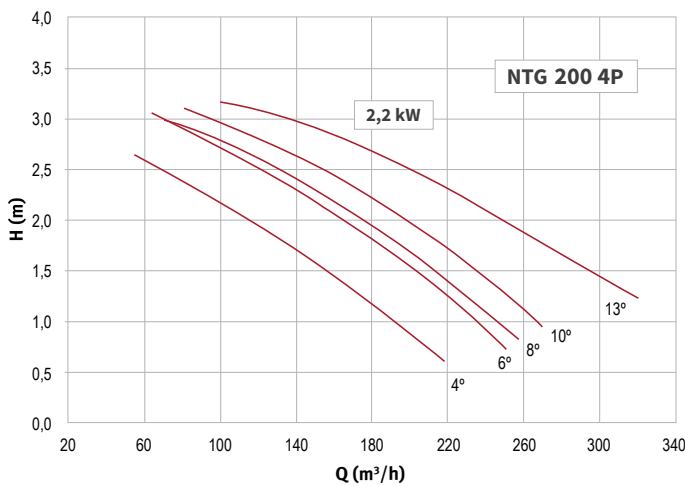
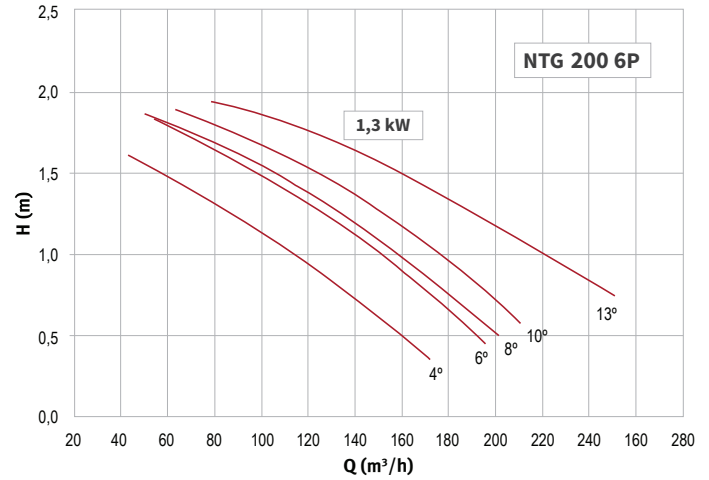
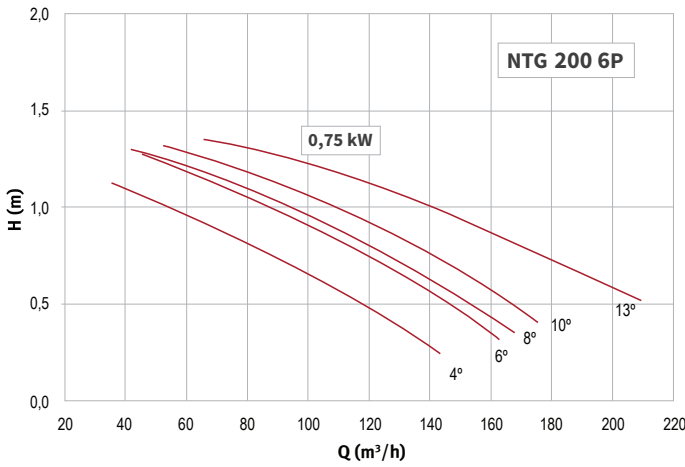
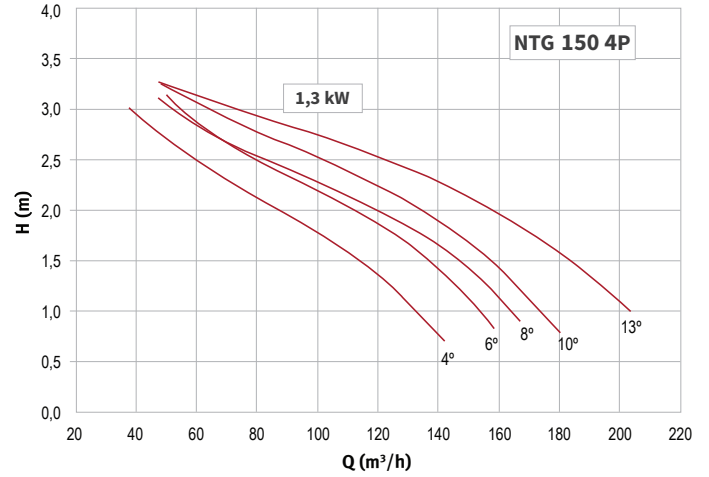
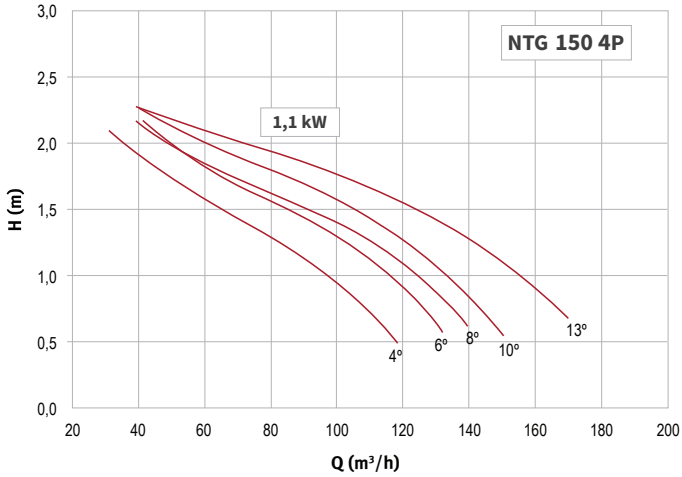
MODEL	DESIGNATION
01	Impeller
02	Shaft
06A	Bearing
06B	Bearing
13	Terminal box cover
17A	Suction casing
17B	Discharge casing
18A	Drain/ vent
18B	Cable gland
49	Motor
57	Eye bolt
99	Terminal box

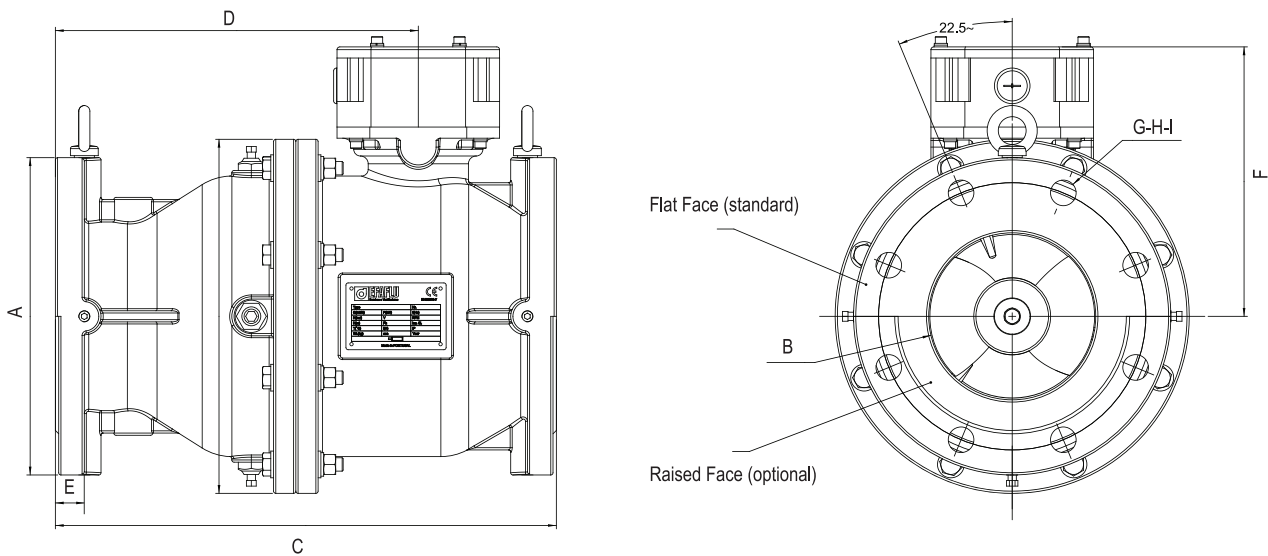


CURVES ACCORDING TO ISO 9906/ EN 50216-7

50 Hz

60 Hz





DIMENSIONS (mm)

PUMP	A	B	C	D	E	F	G	H	I	WEIGHT (Kg)
NTG 150	285	150	450	326	26	242	8	23	240	80
NTG 200	340	200	548	408	26	274	8	23	295	115

MOTOR

MOTOR	POLES	FREQUENCY (Hz)	VOLTAGE (V)	POWER (kW)	COS ϕ	INOM (A)	IA (A)	EFF. CLASS
0,75	4	50	400	0,75	0,70	1,9	12,4	IE3
		60	460	0,90	0,70	1,9	11,9	
0,75	6	50	400	0,75	0,67	2,1	9,5	
		60	460	0,90	0,67	2,1	9,1	
1,1	4	50	400	1,1	0,72	2,6	14,8	
		60	460	1,3	0,72	2,6	14,2	
1,1	6	50	400	1,1	0,67	2,9	15,1	
		60	460	1,3	0,67	2,9	14,5	
1,5	4	50	400	1,5	0,71	3,6	25,9	
		60	460	1,7	0,71	3,6	24,9	
2,2	4	50	400	2,2	0,82	4,5	36,0	
		60	460	2,5	0,82	4,5	34,6	
3	4	50	400	3,0	0,78	6,4	51,8	
		60	460	3,5	0,78	6,4	49,8	

TG - INLINE AXIAL PUMPS



TG

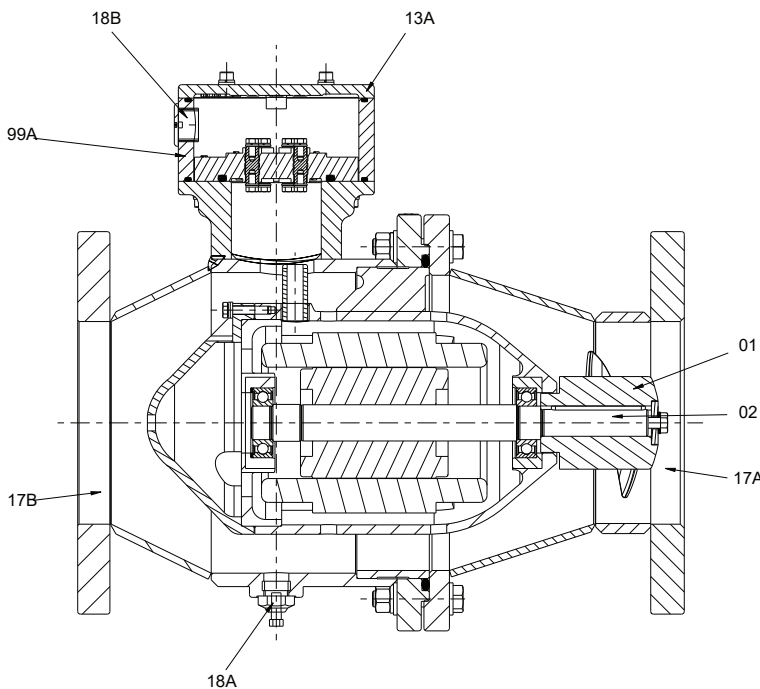
TG is a Inline axial type pump, from DN125 up to DN200, manufactured in welded steel construction with aluminium motor housing. The impeller and terminal box are in aluminium Al Si10 Mg.

TG, as standard, can be supplied with hot dip galvanization surface treatment (80 µm) or with C5-M surface treatment (320 µm) with IP56 protection. It can be installed horizontally or vertically according to the transformer layout, with a maximum sound pressure of 63 ± 2 dB(A) @ 1 meter (50Hz), measured on free field hemispheric surface. Flanges can be DIN or ISO PN10, raised or flat faced.

CONSTRUCTION	
PARTS	MATERIALS
Casing	Welded Construction
Impeller	Aluminium Al Si10 Mg
Shaft	AISI420
Terminal Box	Aluminium Al Si10 Mg
Screws	A4 – AISI316

ELECTRICAL DATA	SPECIFICATIONS
Power	0,75 up to 2,2 kW
Poles	4
Voltage	3x400 VAC@50 Hz or 3x460VAC@60Hz

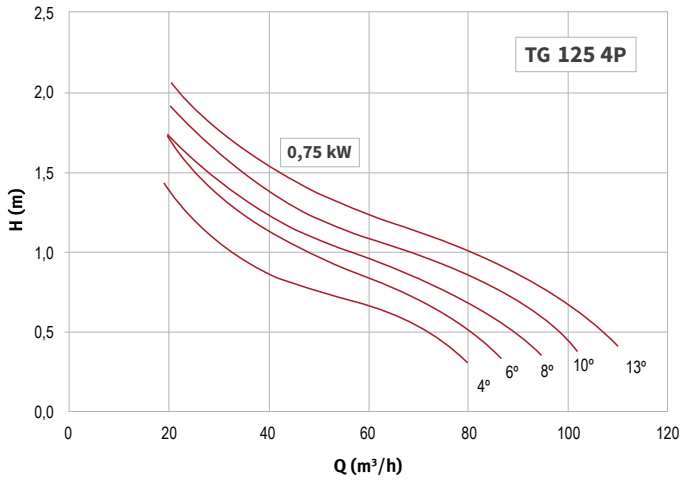
PART LIST



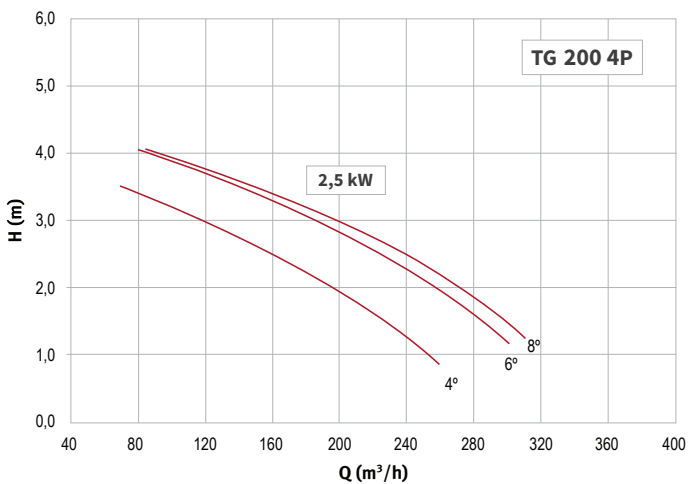
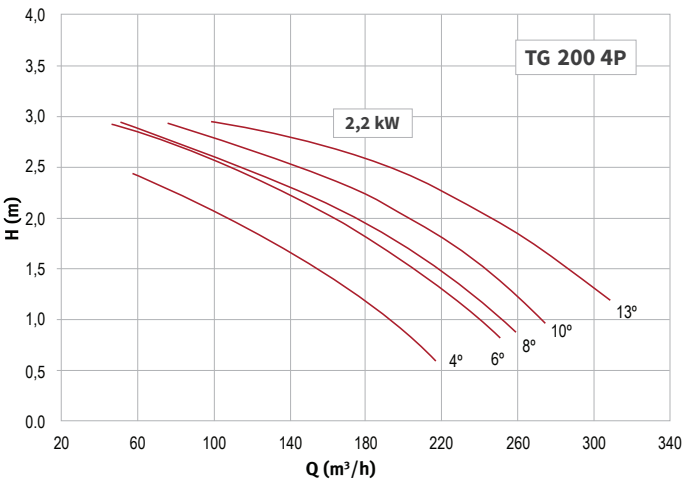
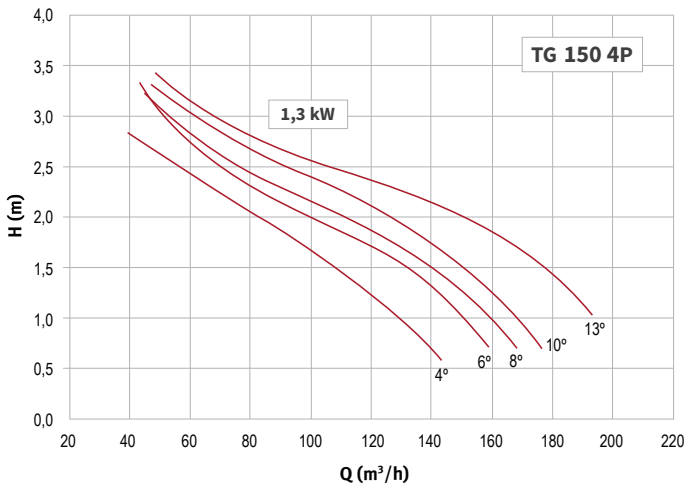
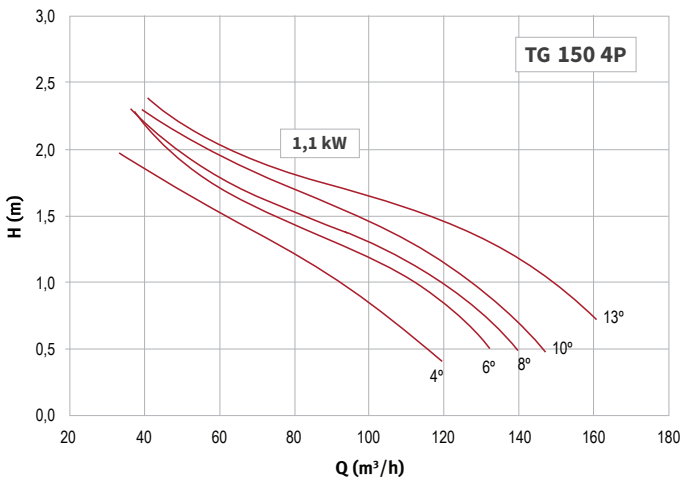
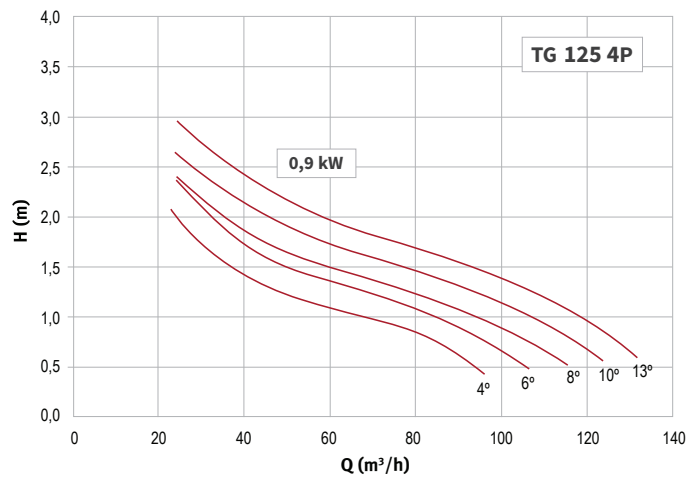
MODEL	DESIGNATION
01	Impeller
02	Shaft
06	Bearing
13	Terminal box cover
17A	Suction casing
17B	Discharge casing
18A	Drain/ vent
18B	Cable gland
49	Motor
99	Terminal box

CURVES ACCORDING TO ISO 9906/ EN 50216-7

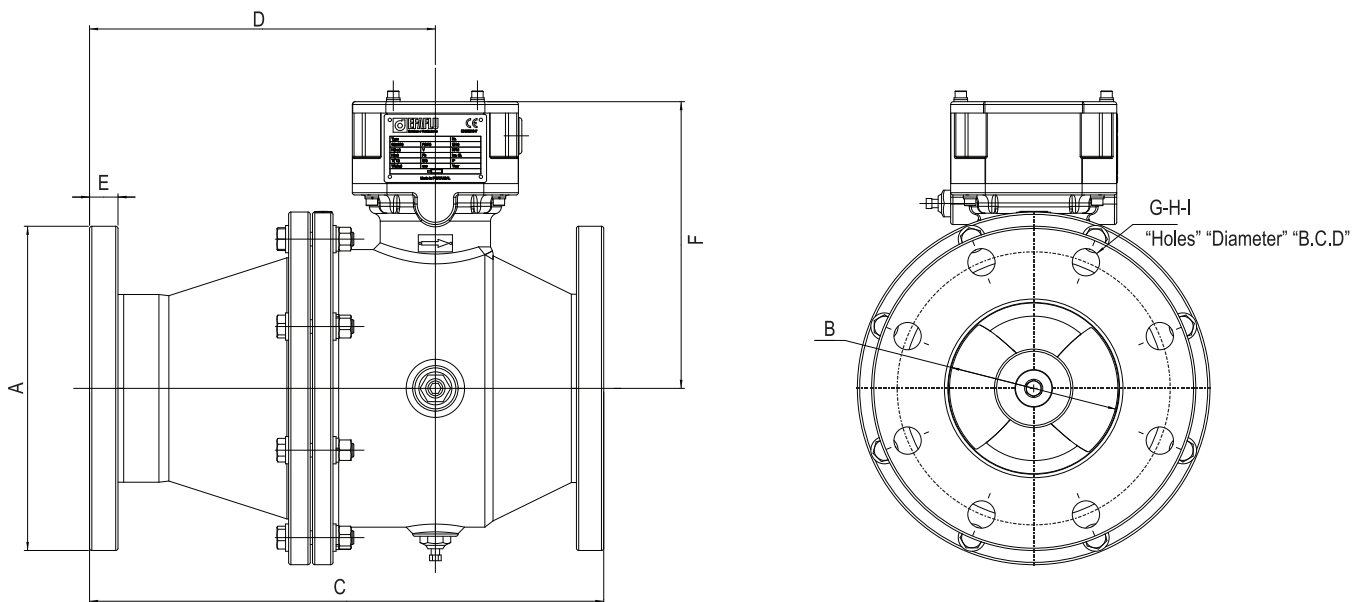
50 Hz



60 Hz



TG - INLINE AXIAL PUMPS



DIMENSIONS (mm)

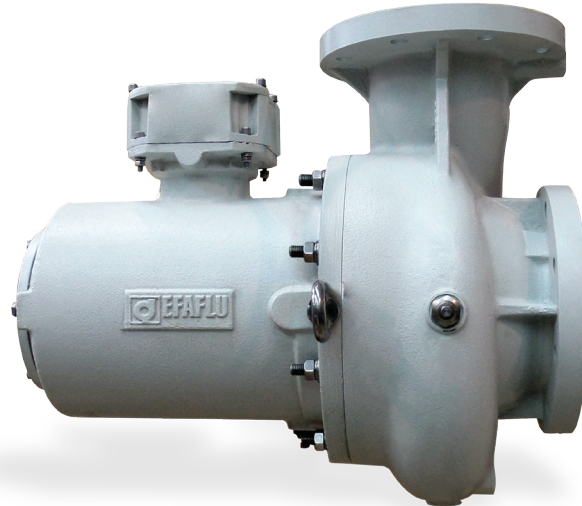
PUMP	A	B	C	D	E	F	G	H	I	WEIGHT (Kg)
TG 125	250	125	450	302	22	260	8	18	210	50
TG 150	285	150	450	302	25	252	8	22	240	75
TG 200	340	200	548	356	26	277	8	22	295	85

MOTOR

MOTOR	POLES	FREQUENCY (Hz)	VOLTAGE (V)	POWER (kW)	COS ϕ	INOM (A)	IA (A)	EFF. CLASS
0,75	4	50	400	0,75	0,70	1,9	12,4	IE3
		60	460	0,90	0,70	1,9	11,9	
1,1	4	50	400	1,1	0,78	2,5	16,8	IE2
		60	460	1,3	0,78	2,5	16,1	
2,2	4	50	400	2,2	0,78	4,9	35,7	
		60	460	2,5	0,78	4,9	34,3	

CONSTRUCTION	
PARTS	MATERIALS
Casing	EN-GJL-250 or EN-GJS-400
Impeller	EN-GJL-250 or EN-GJS-400
Shaft	AISI420
Terminal Box	Aluminium Al Si10 Mg
Screws	A4 - AISI316

ELECTRICAL DATA	SPECIFICATIONS
Power	0,75 up to 7,5 kW
Poles	4/ 6
Voltage	3x400 VAC@50 Hz or 3x460VAC@60Hz

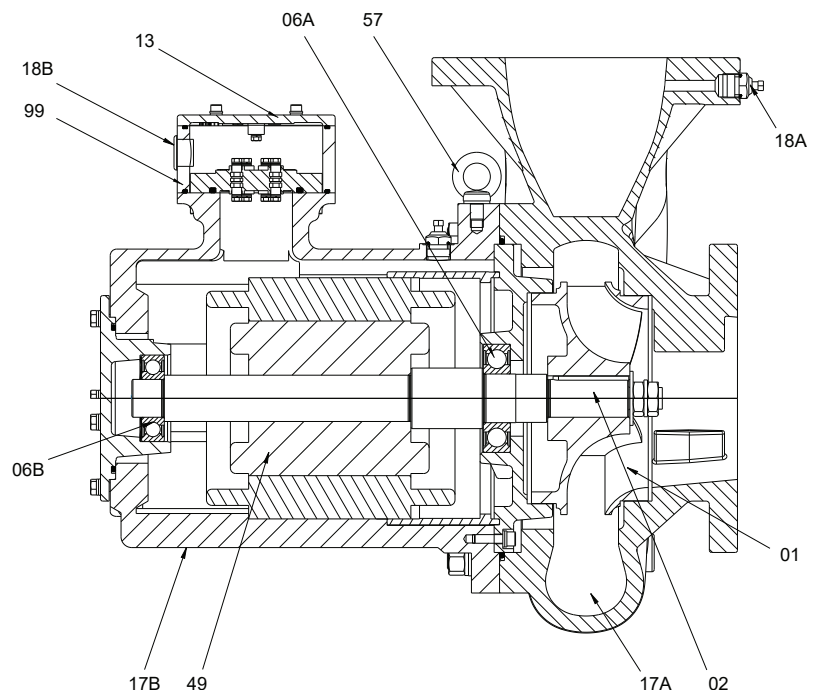


TGCL

TGCL is a end suction radial type pump, from DN65 up to DN150, manufactured in EN-GJL-250 or EN-GJS-400 Cast iron with IP56 protection. Terminal box in aluminium Al Si10 Mg. TGCL are supplied, as standard, with C5-M surface treatment (320 µm). It can be installed horizontally or vertically with the possibility of motor housing being rotated in 90° angles, according to the transformer layout. Flanges can be DIN or ISO PN10, raised or flat faced. The maximum sound pressure is 64 ± 2 dB(A)@1 meter (50 Hz), measured on free field hemispheric surface.

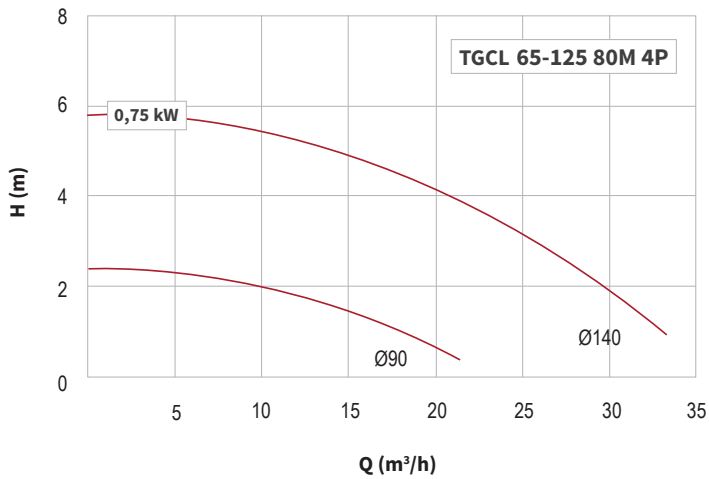
PART LIST

MODEL	DESIGNATION
01	Impeller
02	Shaft
06A	Bearing
06B	Bearing
13	Terminal box cover
17A	Pump casing
17B	Motor casing
18A	Drain/ vent
18B	Cable gland
49	Motor
57	Eye bolt
99	Terminal box

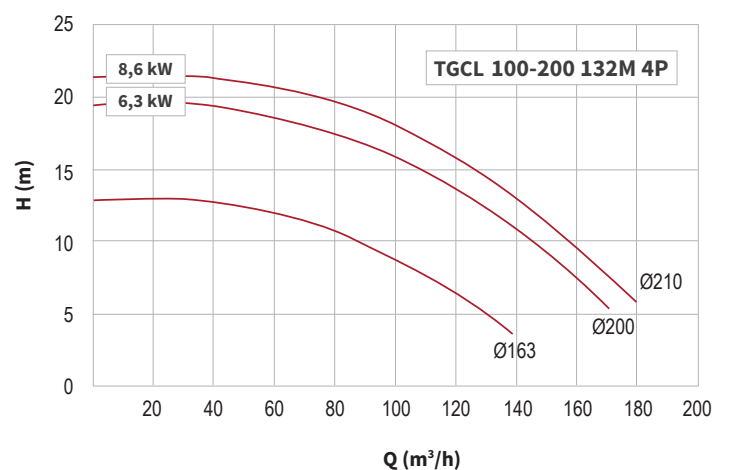
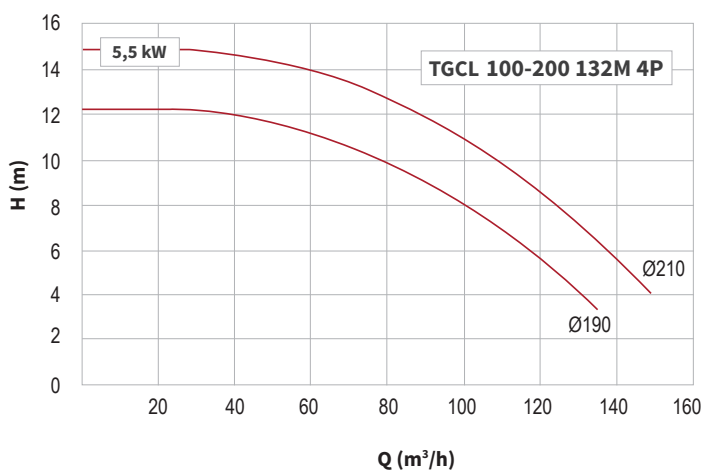
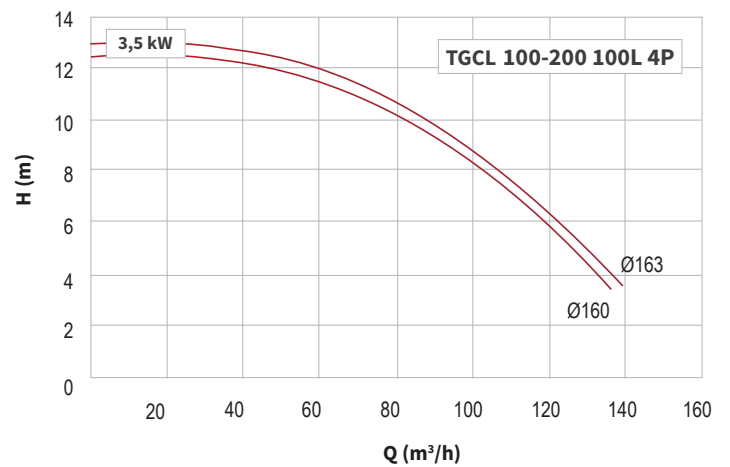
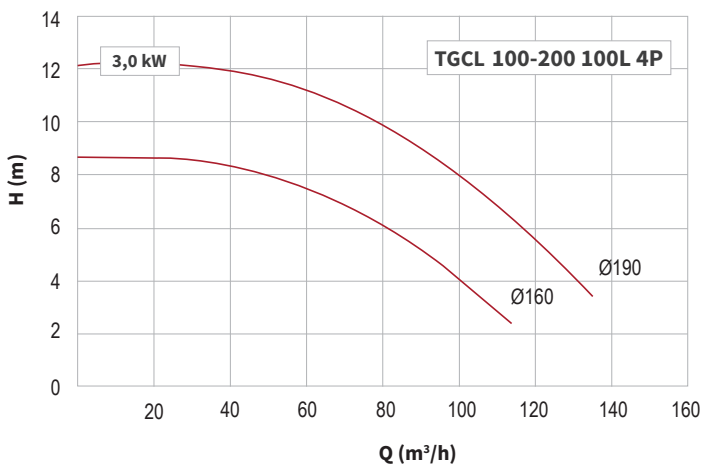
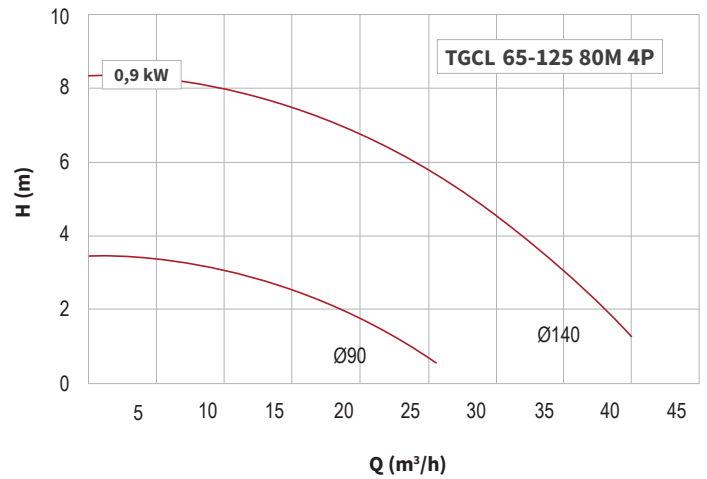


CURVES ACCORDING TO ISO 9906/ EN 50216-7

50 Hz

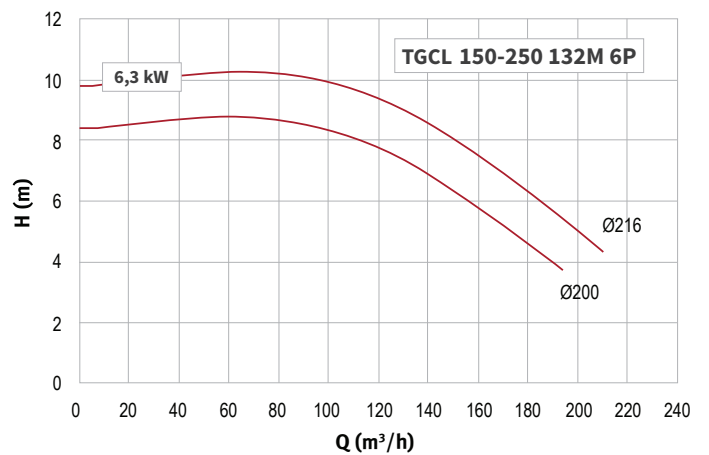
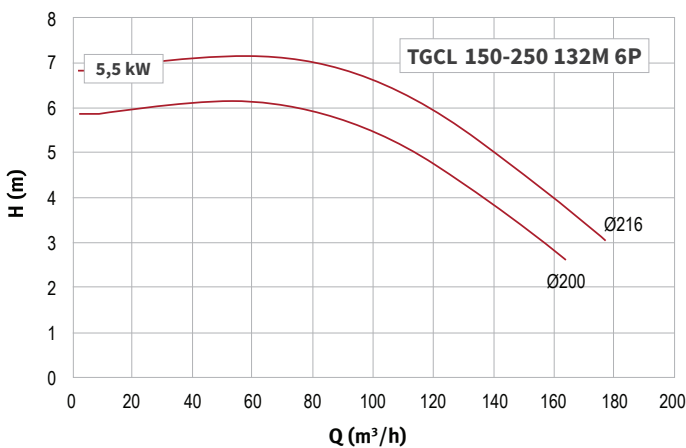
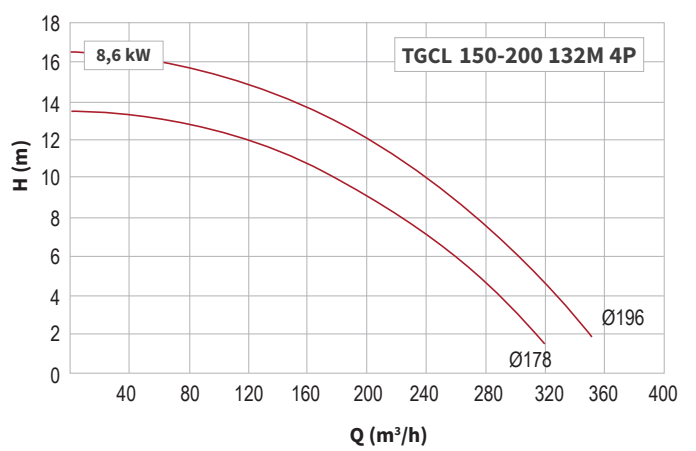
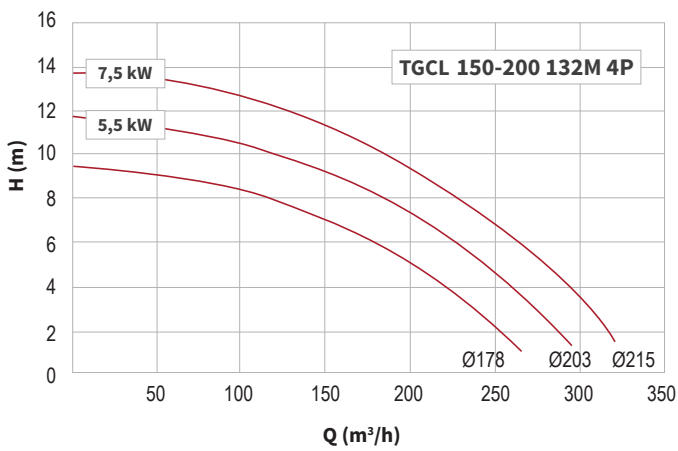
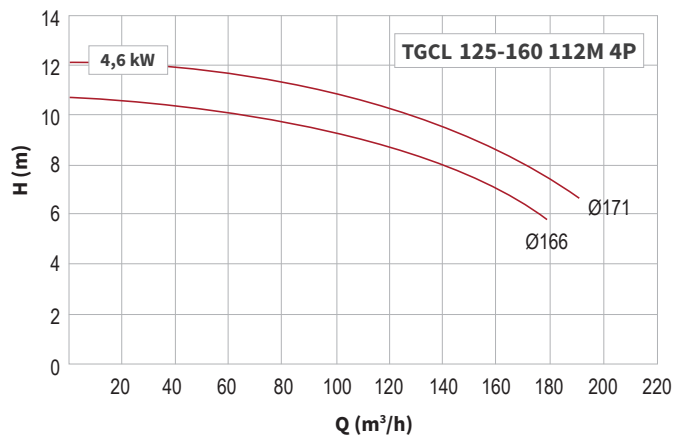
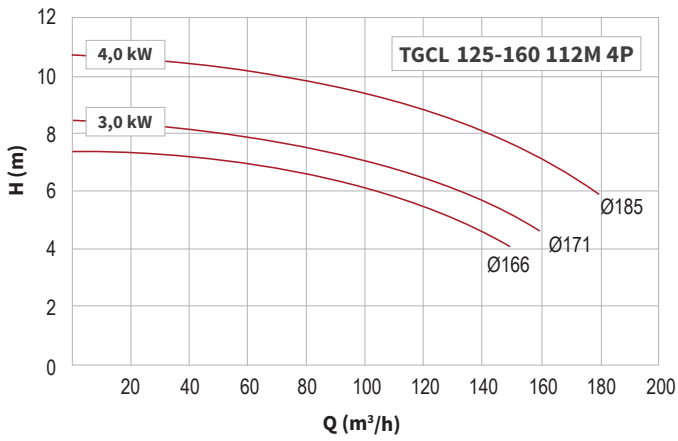


60 Hz

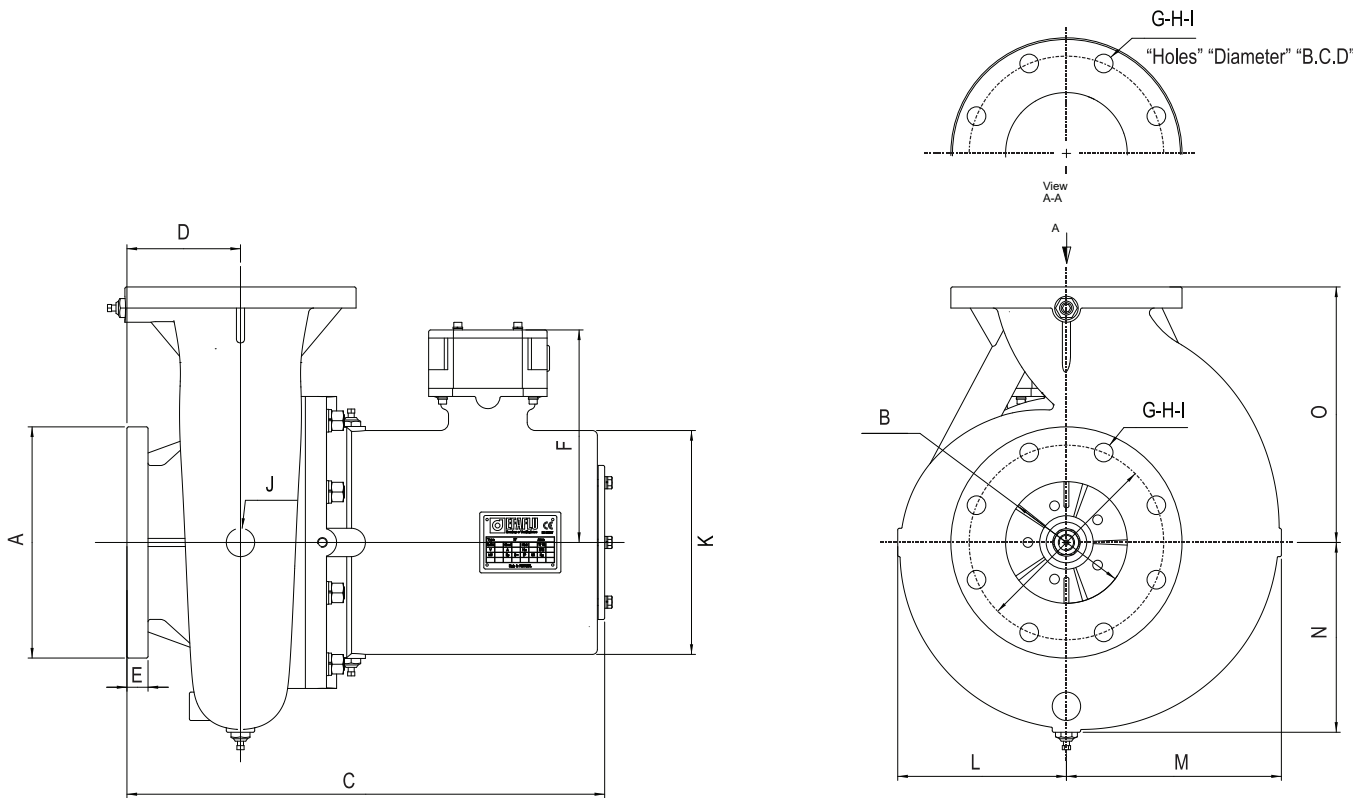


50 Hz

60 Hz



TGCL - END SUCTION RADIAL PUMPS



DIMENSIONS (mm)

PUMP	A	B	C	D	E	F	G	H	I	J	K	L	M	N	O	WEIGHT(Kg)
TGCL 65-125 80M	185	65	392	86	18	206	4	18	145	35	171	113	121	113	150	55
TGCL 100-200 100L	220	100	524	125	24	236	8	18	180	35	211	155	188	173	250	120
TGCL 100-200 132M	220	100	559	129	24	262	8	18	180	35	276	180	188	180	250	160
TGCL 125-160 112M	250	125	559	125	26	247	8	18	210	35	235	181	221	202	280	145
TGCL 150-200 132M	285	150	589	140	26	262	8	23	240	35	276	208	265	234	315	195
TGCL 150-250 132M	285	150	574	140	26	262	8	23	240	35	276	211	262	237	355	190

MOTOR

MOTOR	POLES	FREQUENCY (Hz)	VOLTAGE (V)	POWER (kw)	COS ϕ	INOM (A)	IA (A)	EFF. CLASS
0,75	4	50	400	0,75	0,70	1,9	12,4	IE3
		60	460	0,90	0,70	1,9	11,9	
3	4	50	400	3,0	0,78	6,4	51,8	
		60	460	3,5	0,78	6,4	49,8	
4	4	50	400	4,0	0,82	8,0	68,0	
		60	460	4,6	0,82	8,0	65,3	
5,5	4	50	400	5,5	0,84	10,6	95,4	
		60	460	6,3	0,84	10,6	91,6	
	6	50	400	5,5	0,75	12,1	90,8	
		60	460	6,3	0,75	12,1	87,1	
7,5	4	50	400	7,5	0,85	14,1	126,9	
		60	460	8,6	0,85	14,1	121,8	

FANS

Our range offers an extended range of sizes and different types of design features that offer flexibility to our customers.

We have short and long casing solutions, TF, NTF, TFBR and VTTF, from 450 up to 1000 mm with a wide range of options.

Our fans are designed and approved according to EN50216-12, all fans delivered to our customers are 100% EN50216-12 Routine Tested delivered together with the certificate and report test.

They're designed to be used in radiators or air coolers according to EN50216-12. They can be delivered with different surface treatments, such as hot dip galvanization or C5-M surface protection.

To ensure a vibration free performance and to extend the bearings life, we perform dynamic balancing of the impeller.



FANS



NOMENCLATURE

NTF 800 R / A / 9 / 41,5 - 2,2 / 6 / C5-M / N

Additional specifications

N: Standard
S: According to order

Surface treatment

C3: C3 coating system
C5-M: C5-M coating system
Z: Hot dip galvanization

Motor's number of poles

4
6
8
10

Motor's nominal power (kW)

0,18
0,25
0,37
1,1
1,5
2,2

Blade's pitch angle

Number of blades

Impeller material

P: Polypropylene/ Glass Fiber
A: Aluminium

Fan design

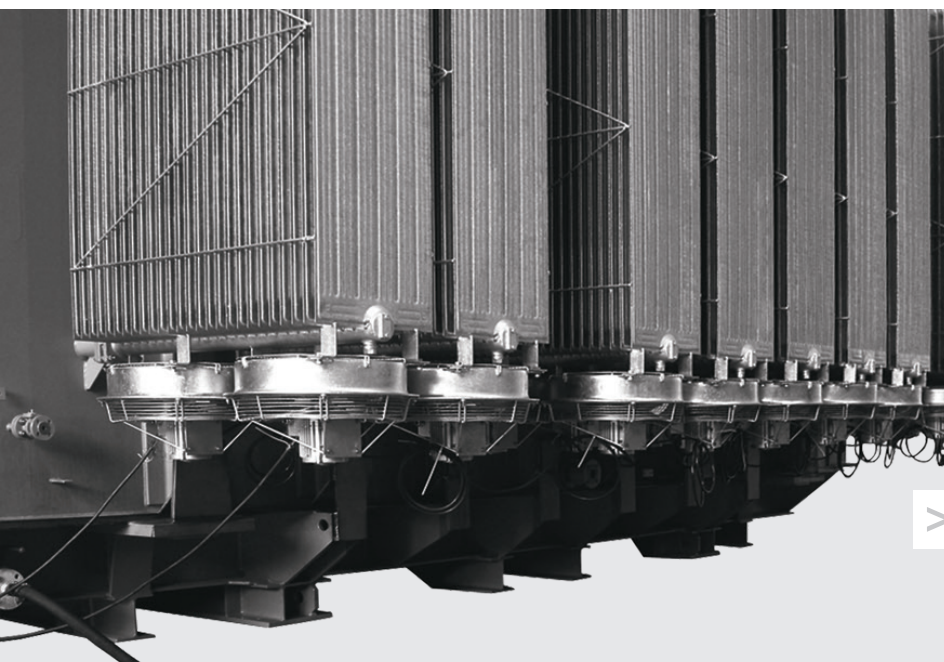
R: Round
S: Square
L: Long

Nominal diameter (mm)

450
500
550
800
1000

Series

TF
TFBR
NTF
VTTF



> Application example

CONSTRUCTION	
PARTS	MATERIALS
Casing	Carbon Steel
Impeller	Stamped Aluminium
Shaft	AISI420
Terminal Box	IP56
Screws	A4 - AISI316

ELECTRICAL DATA	SPECIFICATIONS
Power	0,18 up to 0,25 kW
Poles	4
Voltage	3x240/400 VAC@50 Hz or 3x460VAC@60Hz



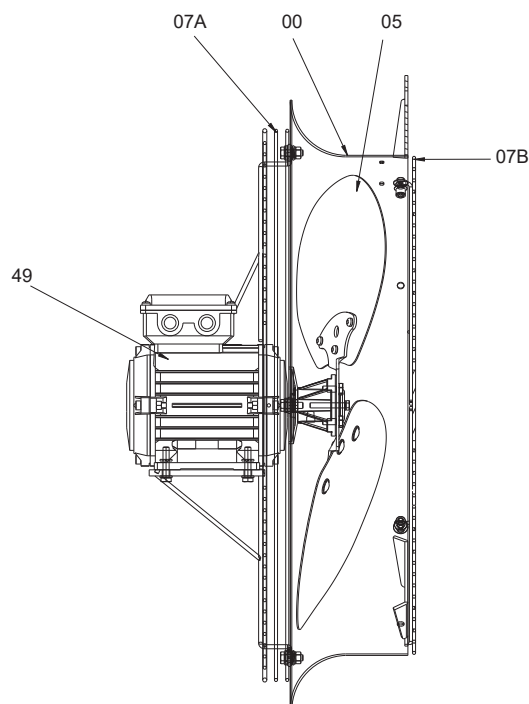
TF

TF is a 450 mm short casing type fan, its body is manufactured in carbon steel and the electric motor offers IP56 protection. It can be supplied with hot dip galvanization (80 µm) or with C5-M surface protection (320 µm), along with AISI 316 (A4) screws. Impeller is made from stamped aluminium and the fan is supplied with back and front grid protection.

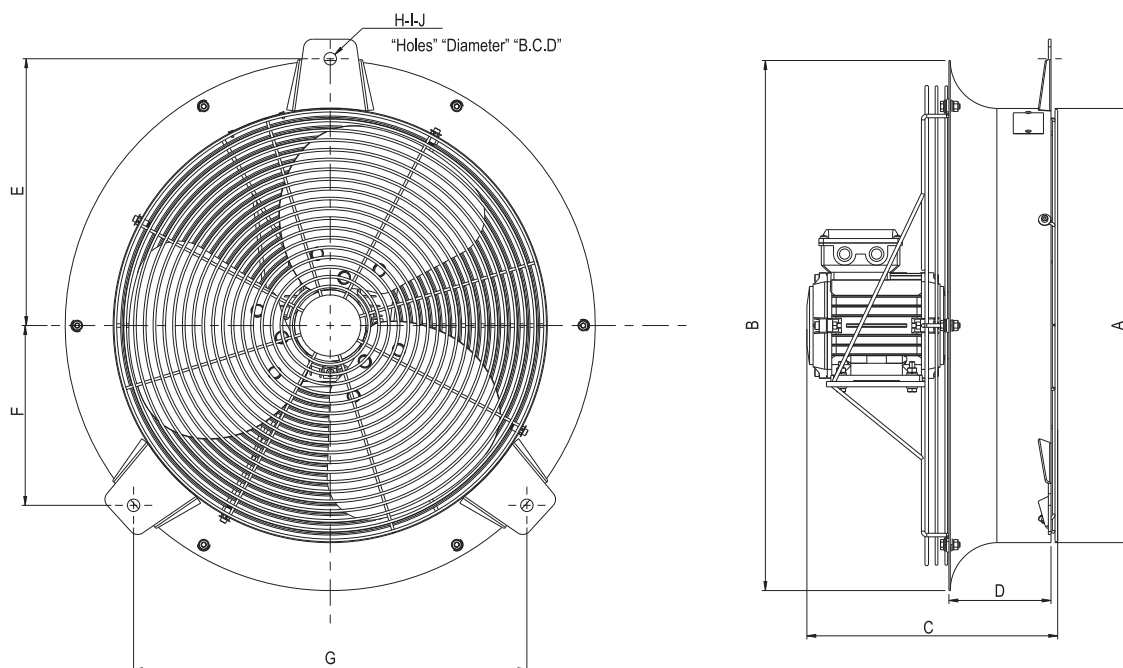
TF can be installed horizontally or vertically, according to the transformer layout, with a maximum sound pressure of 65 ± 2 dB(A) @ 2 meters (50 Hz), measured on free field hemispheric surface.

PART LIST

MODEL	DESIGNATION
00	Fan casing
05	Impeller
07A	Inlet protection grid
07B	Outlet protection grid
49	Motor



TF - SHORT CASING FAN



DIMENSIONS (mm)

FAN	A	B	C	D	E	F	G	H	I	J
TF 450	489	598	282	115	301	203	443	3	14	601

TECHNICAL FEATURES

	TF 450R/ A/ 3/ 22 - 0,18/ 4	TF 450R/ A/ 3/ 28 - 0,25/ 4
Frequency (Hz)	50	50
Flow (m ³ /h)	4800	6000
Static Pressure (Pa)	0 (free air)	0 (free air)
Fan Speed (rpm)	1350	1350
Nominal Power (kW)	0,18	0,25
Nr. Poles	4	4
SPL at 2m [dB(A)]	61	65
Weight (kg)	13	13

CONSTRUCTION	
PARTS	MATERIALS
Casing	Carbon Steel
Impeller	Stamped Aluminium
Shaft	AISI420
Terminal Box	IP56
Screws	A4 – AISI316

ELECTRICAL DATA	SPECIFICATIONS
Power	0,18 up to 0,37 kW
Poles	6/8
Voltage	3x240/400 VAC@50 Hz or 3x460VAC@60Hz



TFBR

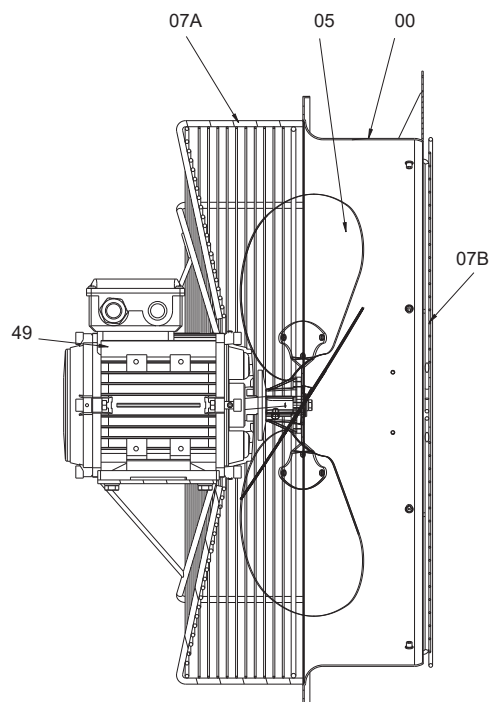
TFBR is a 500 and 550 mm short casing type fan with low noise design conception, its body is manufactured in carbon steel and the electric motor offers IP56 protection.

Impeller is made from stamped aluminium and the fan is supplied with back and front grid protection. It can be supplied with hot dip galvanization (80 µm) or with C5-M surface protection (320 µm), along with AISI 316 (A4) screws.

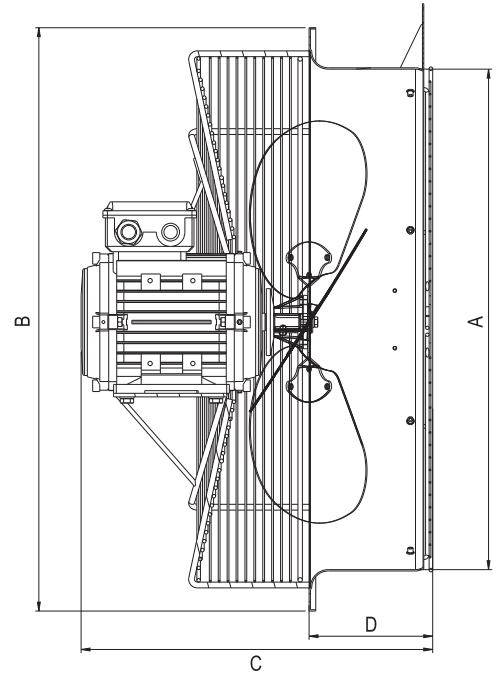
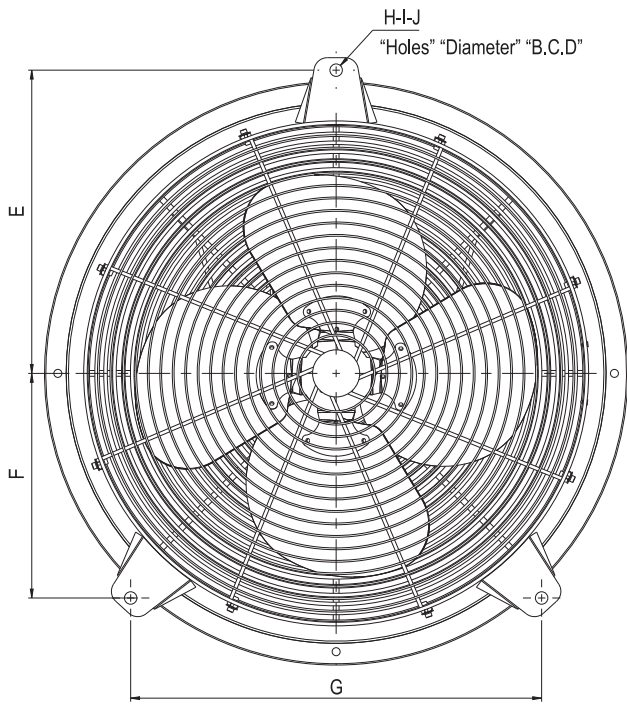
TFBR can be installed horizontally or vertically, according to the transformer layout, with a maximum sound pressure of 60 ± 2 dB(A) @ 2 meters (50 Hz), measured on free field hemispheric surface.

PART LIST

MODEL	DESIGNATION
00	Fan casing
05	Impeller
07A	Inlet protection grid
07B	Outlet protection grid
49	Motor



TFBR - SHORT CASING FAN



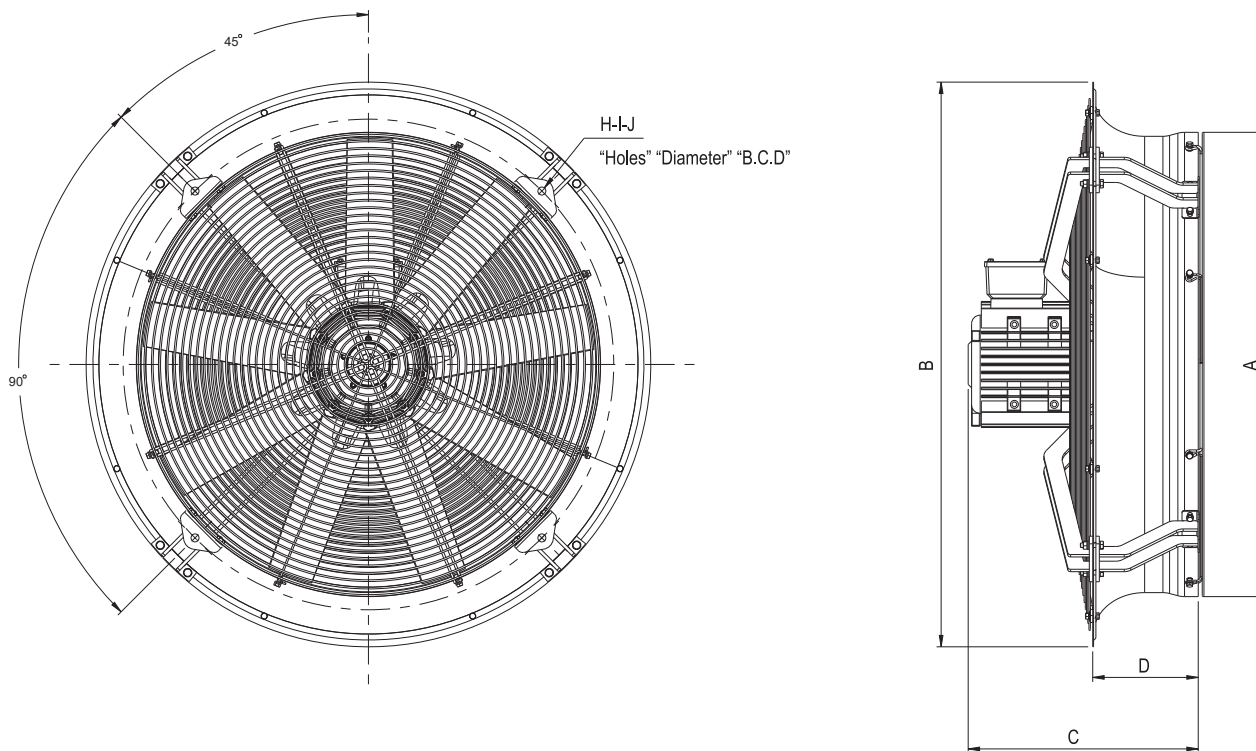
DIMENSIONS (mm)

FAN	A	B	C	D	E	F	G	H	I	J
TFBR 500	518	595	370	141	301	203	443	3	14	601
TFBR 550	562	655	380	138	341	252	462	3	14	682

TECHNICAL FEATURES

	TFBR 500R/ A/ 4/ 27 - 0,18/ 8	TFBR 550R/ A/ 4/ 27 - 0,37/ 6	TFBR 550R/ A/ 4/ 27 - 0,18/ 8
Frequency (Hz)	50	50	50
Flow (m³/h)	4300	7500	6320
Static Pressure (Pa)	0 (free air)	0 (free air)	0 (free air)
Fan Speed (rpm)	675	900	690
Nominal Power (kW)	0,18	0,37	0,18
Nr. Poles	8	6	8
SPL at 2m [dB(A)]	50	60	51
Weight (kg)	19	20	20

NTF - SHORT CASING FAN



DIMENSIONS (mm)

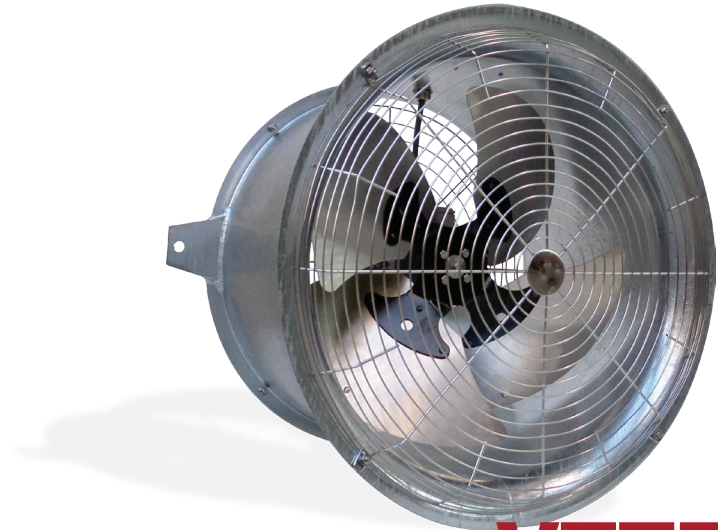
FAN	A	B	C	D	H	I	J
NTF 800	814	990	415	195	4	14	860
NTF 1000	1016	1170	546	210	4	14	1062

TECHNICAL FEATURES

	NTF 800R/ A/ 9/ 41,5 - 2,2/ 6	NTF 800R/ A/ 9/ 41,5 - 1,1/ 8	NTF 1000R/ A/ 6/ 43 - 2,2/ 8	NTF 1000R/ A/ 6/ 43 - 1,5/ 10
Frequency (Hz)	50	50	50	50
Flow (m ³ /h)	25.000	17.500	37.500	30.000
Static Pressure (Pa)	0 (free air)	0 (free air)	0 (free air)	0 (free air)
Fan Speed (rpm)	960	710	720	570
Nominal Power (kW)	2,2	1,1	2,2	1,5
Nr. Poles	6	8	8	10
SPL at 2m [dB(A)]	74	65	75	69
Weight (kg)	55	47	78	94

CONSTRUCTION	
PARTS	MATERIALS
Casing	Carbon Steel
Impeller	Stamped Aluminium
Shaft	AISI420
Terminal Box	IP56
Screws	A4 - AISI316

ELECTRICAL DATA	SPECIFICATIONS
Power	0,18/ 0,25 kW
Poles	6
Voltage	3x230/400 VAC@50 Hz or 3x460VAC@60Hz



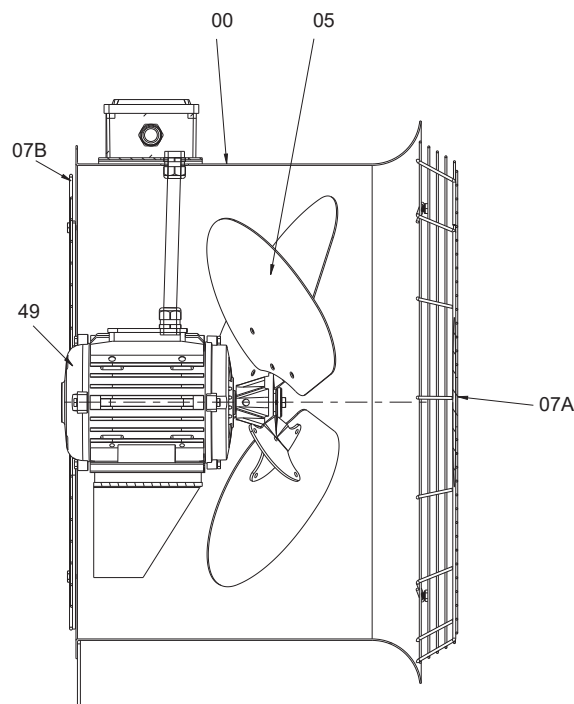
VTTF

VTTF is a 450 mm long casing type fan, where the motor is inside the fan housing, thus more protected from outside environment conditions. Its body is manufactured in carbon steel and the electric motor offers IP56 protection. Impeller is made from stamped aluminium and the fan is supplied with back and front grid protection. It can be supplied with hot dip galvanization (80 µm) or with C5-M surface protection (320 µm), along with AISI 316 (A4) screws.

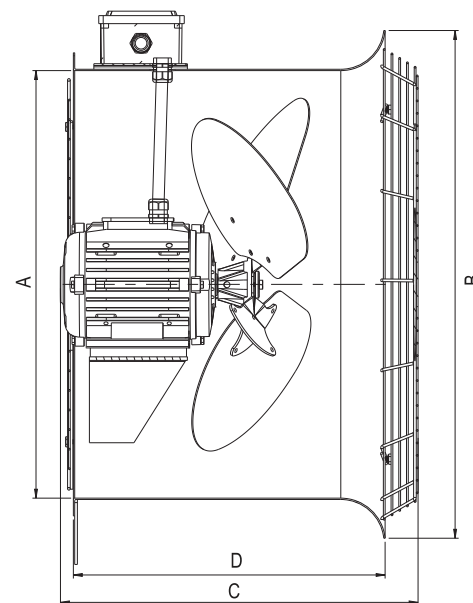
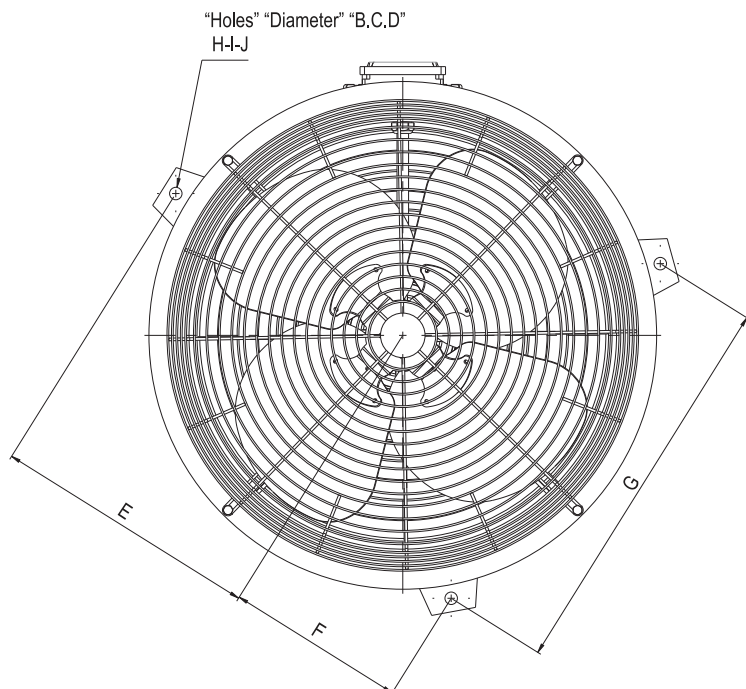
VTTF can be installed horizontally or vertically, according to the transformer layout, with a maximum sound pressure of 51 ± 2 dB(A) @ 2 meters (50 Hz), measured on free field hemispheric surface.

PART LIST

MODEL	DESIGNATION
00	Fan casing
05	Impeller
07A	Inlet protection grid
07B	Outlet protection grid
49	Motor



VTTF - LONG CASING FAN



DIMENSIONS (mm)

FAN	A	B	C	D	E	F	G	H	I	J
VTTF 450	480	570	400	350	301	203	443	3	14	601

TECHNICAL FEATURES

	VTTF 450L/ A/ 4/ 27 - 0,18/ 6	VTTF 450L/ A/ 4/ 33 - 0,25/ 6
Frequency (Hz)	50	50
Flow (m ³ /h)	3600	5250
Static Pressure (Pa)	0 (free air)	0 (free air)
Fan Speed (rpm)	850	830
Nominal Power (kW)	0,18	0,25
Nr. Poles	6	6
SPL at 2m [dB(A)]	50	51
Weight (kg)	18	19



OTHER SOLUTIONS BY REQUEST

- » Cooling fans totally designed according to our client needs;
- » Other flows;
- » Special casing treatments (painting, powder coating);
- » Fan guards in stainless steel, painted or powder coated;
- » Cable connectors;
- » Flexible mounting solutions;
- » Single phase electric motors;
- » Different voltages and frequencies;
- » Different gasket materials according to fluid and temperature conditions.

Sales & Export

[+351] 252 298 700

geral@efafllu.pt

export@efafllu.pt

- » Additional information
- » Custom selection
- » Special requests

OTHER SOLUTIONS BY REQUEST


AFTER SALES SERVICES AND COMMISSIONING

Our after sales services relies on experienced field engineers that will provide our client the best solutions at the least possible time. We offer full availability to diagnose, evaluate and solve problems at the client's requested location. We keep in store original spare parts for 20 years ensuring a fast and reliable maintenance, and a long lasting product. Our commitment does not end with the delivery of the equipment. We offer a full costumer support during the installation and startup, along with precise instructions for safe and correct use. We want our client to benefit the most from our services, adding value to the business chain.

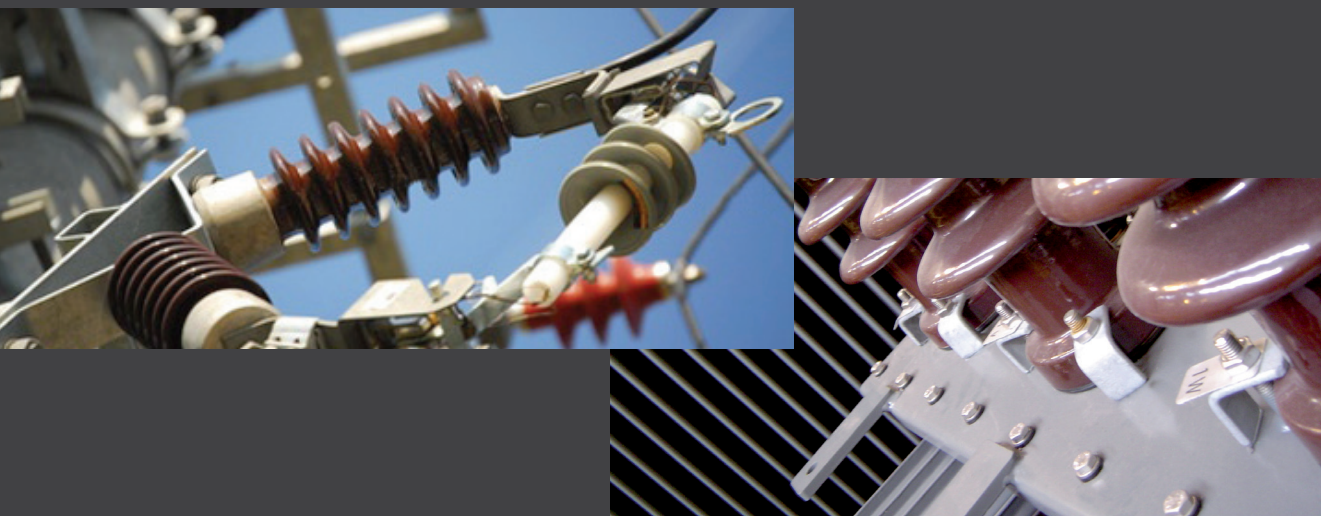
Technical Assistance

[+351] 964 241 072

sav@efafllu.pt

- 
- *Support during the installation*
 - *Starting of equipment*
 - *After-sales service*
 - *Maintenance and repair*





EFAFLU is a Portuguese company with more than 70 years of experience, entirely dedicated to development, manufacture, marketing, technical support as well as after-sales service of pumps, pumping systems and fans. Our products are distributed throughout Portugal and abroad by specialized and qualified partners.

We continuously develop our organisation and our products in order to provide advanced technology solutions and quality services that ensure we are the most reliable partner in the market. We are aware of the environmental problem. Accordingly, we are concerned about supplying equipment with the highest energy savings. Furthermore, we manufacture from recyclable materials.

We are committed to create value for society by betting on employees' personal valuation and fulfilment, raising the quality standards of the market and a sustained value relationship towards shareholders.

HEADQUARTERS:

Póvoa de Varzim
Tlf.: [+351] 252 298 700
Fax: [+351] 252 615 480
e-mail: geral@efafllu.pt
vendasnorte@efafllu.pt

LISBON OFFICE:

Agualva - Cacém
Tlf.: [+351] 214 134 700
Fax: [+351] 214 134 709
e-mail: vendassul@efafllu.pt

Cofinanciado por:



www.efafllu.pt

EFAFLU Bombas e Ventiladores, S.A.