

QB

PERIPHERAL PUMPS AND UNITS

APPLICATIONS

Small irrigation systems
 Collection of water in wells and tanks
 Domestic pressure boosting

CONSTRUCTION MATERIALS

Pump body: cast iron
 Impeller: Brass
 Shaft: Carbon Steel
 Seal: Mechanical
 Suction and discharge body: cast iron

WORKING LIMITS

Maximum flow rate: up to 4,2 m³/h
 Maximum head: 85 mca
 Liquid temperature: up to +80°C
 Maximum operating pressure: 10 bar
 Maximum ambient temperature: 40°C

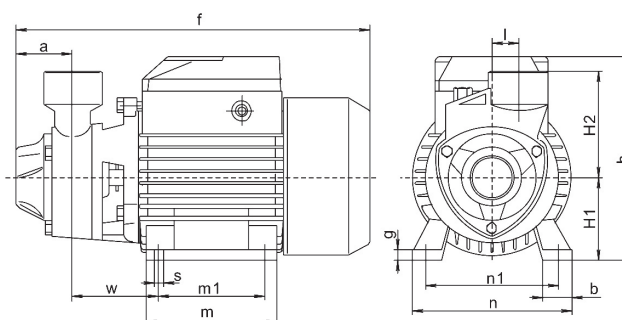
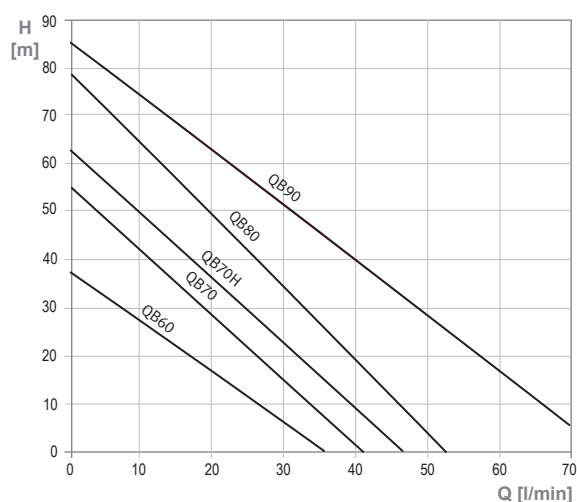
MOTOR SPECIFICATIONS

Voltage: 1x230 V
 Insulation class: B
 Protection class: IP44
 Rotation: 2900 r.p.m.



The **QB series** comprise peripheral pumps made of cast iron, suitable for pumping small flow rates of clean water.

Os **GP QB units** comprise pumps, vertical tank, manometer and pressure switch for auto-nomous operation.



MODEL	POWER (kW)	ABSORBED CURRENT (A)	CAPACITOR (μF)	DIMENSIONS(mm)																	PUMP WEIGHT (Kg)	
				Suction	Discharge	a	f	h	H1	H2	l	m	m1	n	n1	w	b	g	s	tank height		tank diameter
QB60	0,37	1,5	8	1"	1"	42	265	154	63	80	20	98	80	120	100	63	22	8	7	-	-	5,7
QB70	0,55	2,4	12			55	291	179	71	85	20	110	90	134	112	68	23					8,8
QB70H	0,75	3,7	16			55	291	179	71	85	20	110	90	134	112	68	23					9
QB80	1,1	4,6	20			55	291	179	71	85	20	110	90	134	112	68	23					17,7
QB90	1,5	6,4	30	1½"	1½"	90	405	193	108	85	20	130	100	152	125	100	25	10	9			
GP QB60	0,37	1,5	8	1"	1"	42	265	154	63	80	20	98	80	120	100	63	22	8	7	335	360	10
GP QB70	0,55	2,4	12			55	291	179	71	85		110	90	134	112	68	23					13
GP QB70H	0,75	3,7	16			55	291	179	71	85		110	90	134	112	68	23					13